

AD-LIB SKID BASE

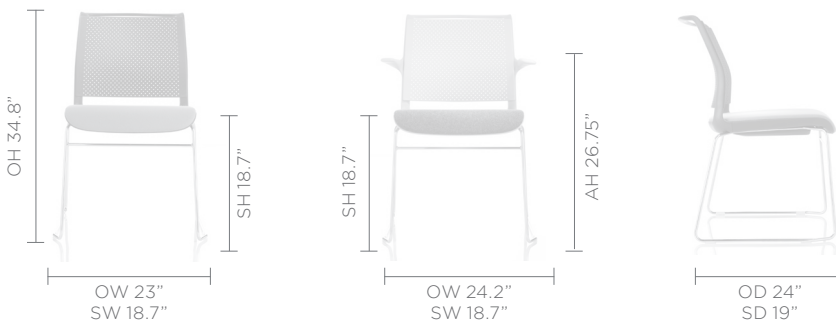
With Ad-Lib we set out to redefine the genre of multi-purpose seating, developed with fewer components so that it still achieves the versatility needed to build an amazingly wide range of chairs.

Ad-Lib has been designed to be specified for all multi-purpose seating uses

throughout the corporate environment; meeting, conference, training, light work or retail environments. It would also be applicable in educational and leisure areas.



DIMENSIONS



DESIGN

PearsonLloyd

The London based practice takes a collaborative approach to its work, embracing the restrictions imposed by production, the market and all the other factors that define a brief. Their work is grounded in research and at

the core is an attempt to understand the relationship between a product, its place, and the way people use it. It is this innovative thinking that earned PearsonLloyd a Red Dot Award for the design of Ad-Lib for Senator.

STANDARD FEATURES (*Selected models only)

- Stacks up to 5 high
- Plastic seat and back frame*
- Plastic contoured seat and back panel*
- Plastic contoured seat and back panel and upholstered seat*
- Fully upholstered seat and back*
- Wire frame in Polished Chrome
- Underseat stack stacking shroud plastic glides
- Plastic glides in Clear
- Back frame with integral arms covered in soft touch Plastic*

OPTIONAL FEATURES

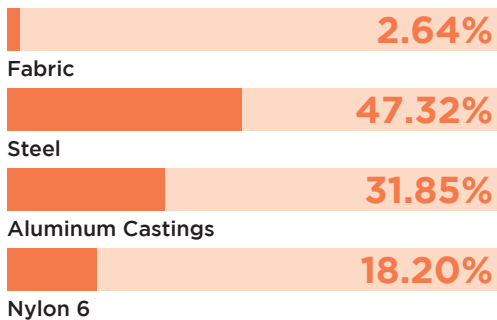
- Plastic glides with felt
- Quick release frame to frame linking
- Detachable writing tablet
- Set of seat identification numbers (A-Z or 1-50)
- Two-tone upholstery*
- Choice of finish options available (See finish page)

PERFORMANCE STANDARDS

- EN13761:200-4
- ANSI/BIFMA X5.1:2011
- SCS-EC10.2-2007 Indoor Air Quality
- EN15373:2007-L2
- GS Certificate

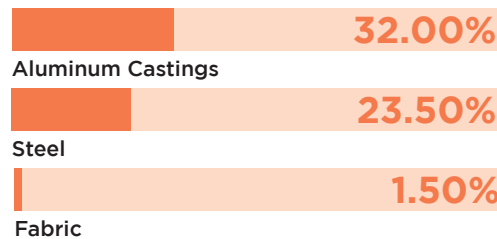
MATERIAL CONTENT

Components are constructed of the following



RECYCLED CONTENT

Contains up to 57.00% of Recycled Material



RECYCLABILITY

The range is 99% recyclable

99%

SENATOR 3 R'S

Senator is committed to continually improving the sustainability of all environmental aspects within our business.

To meet both international standards and our own environmental targets we apply the three R's principle

-Reduce, Reuse and Recycle.

Whilst recycling is the element which receives the most exposure it is actually the last option available and should never be the prime target in anyone's battle to reduce waste.

It is our duty as individuals and as a company to initially attempt to **Reduce** usage. Then we should look to **Reuse** wherever possible and finally, only after these two processes have been exhausted, should we consider **Recycling**.

REDUCE REUSE RECYCLE

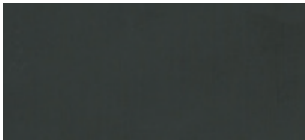
FINISH OPTIONS

Steel frame available in Polished Chrome.

Plastic components available in Light Grey, Anthracite, or Black

Ad-Lib can be upholstered in a broad range of contract upholstery fabrics, vinyl and leathers from The Senator Group standard upholstery collection.

COMPONENT FINISHES



Black



Anthracite



Light Grey

ARM FINISHES



Black



Anthracite

NOTE: Black arms are supplied as standard with Black components, Anthracite arms are supplied as standard with Anthracite or Light Grey components

STEEL FRAME FINISHES



Polished Chrome