



Baudot-Zero

Design by Allermuir

The double-sided domed acoustic panel is the most adaptable and visually striking product within the Baudot range. With height adjustability and a dense concrete base with a small footprint, the Baudot Zero

modules can be reconfigured to adapt to changing environments and activities..



BDZ1



Design Allermuir

Our team of talented in house designers is responsible for creating elegant, innovative furniture designs that not only look beautiful, but minimize the impact on the world around us.

Constantly exploring new product trends and keeping up to date with the latest innovations in technology and materials, our design team creates world class designs of the highest quality.

Standard Features

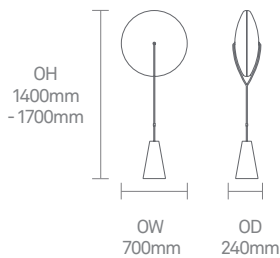
(* - Selected models only)

- Foam construction
- Upholstered in acoustically tested fabrics
- Steel stem
- Cornish Granite concrete cast base
- Height adjustable
- Felt base pads

Optional Features

- Two-tone upholstery

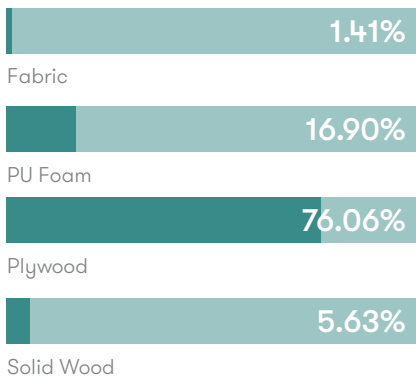
Dimensions



Environmental Performance

Material Content

Components are constructed of the following



Recycled Content

Contains up to 0.50% of Recycled Material



Recyclability

The range is 100% recyclable

100%

Finish Options

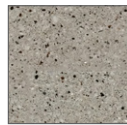
Steel stem finished in Black powder coat
Available in Baudot synergy fabrics only

Stem Finish



Black Powder Coat*

Base Finish



Cornish Granite Concrete*

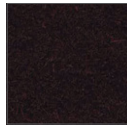
Fabrics



Compound



Sync



Process



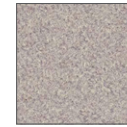
Mutual



Lateral



Chemistry



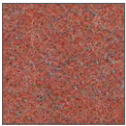
Level



Affix



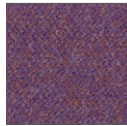
Combo



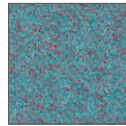
Work



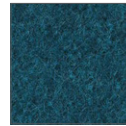
Collaborate



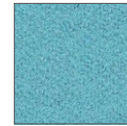
Fellowship



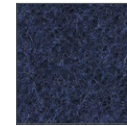
Kinship



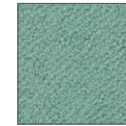
Group



Support



Alike



Regard



Guild



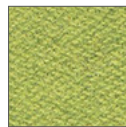
Append



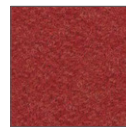
Summon



Pact



Gather



Share



Serendipity