

## COOPER

Cooper is the latest addition to the Toraseen multi-purpose seating portfolio. With more time being spent away from the traditional desk, the demand for light work seating has increased.

Cooper provides diversity, without compromising cost, performance or build. It is designed with contoured upholstery and curved lines for added comfort.



### STANDARD FEATURES

(\*Selected models only)

- Quilted upholstery
- Fully upholstered Plywood shell
- Height adjustable mechanism with tilt action
- 5 Star base
- 60mm Hard wheel castors
- Tubular Steel arms

### OPTIONAL FEATURES

- Castors for hard and soft floor coverings
- Choice of finish option available- see finish page

### DIMENSIONS

OH-Overall Height OD-Overall Depth OW-Overall Width AH-Arm Height BH-Back Height SH-Seat Height SW-Seat Width SD-Seat Depth



## FINISH OPTIONS

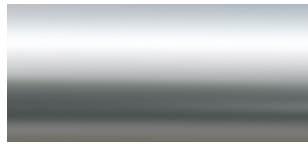
- 5 Star base available in Black Plastic or Polished Aluminium
- Tubular Steel arms are available in Black powder coat, Polished Chrome
- Components finished in Black powder coat
- Cooper can be upholstered in a broad range of contract upholstery fabrics, leathers and vinyls from The Senator Group standard upholstery collection

---

### Component Finishes

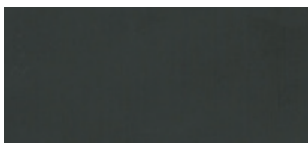


Black (Powder Coat)



Polished Chrome

### Base Finishes



Black (Plastic)

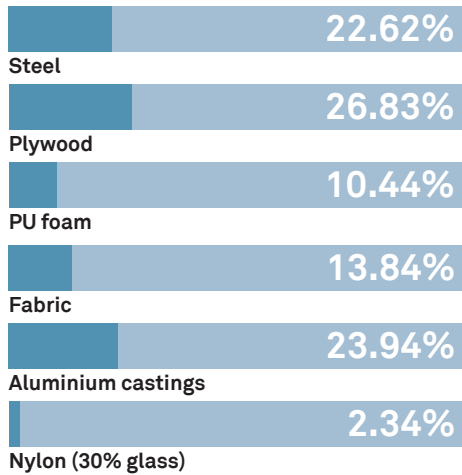


Polished Aluminium

## ENVIRONMENTAL

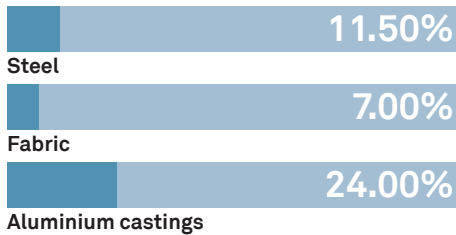
### Material Content

Components are constructed of the following



### Recycled Content

Contains up to 42.50% of Recycled Material



### Recyclability

The range is 99% recyclable

# 99%

Environmental information for this range has been based on CP50A. For more detail please refer to individual EPA sheets.

## THE SENATOR GROUP 3 R'S

The Senator Group is committed to continually improving the sustainability of all environmental aspects within our business.

To meet both international standards and our own environmental targets we apply the three R's principle

**-Reduce, Reuse and Recycle.**

Whilst recycling is the element which receives the most exposure it is actually the last option available and should never be the prime target in anyone's battle to reduce waste.

It is our duty as individuals and as a company to initially attempt to **Reduce** usage. Then we should look to **Reuse** wherever possible and finally, only after these two processes have been exhausted, should we consider **Recycling**.

**-Reduce**  
**-Reuse**  
**-Recycle**