

SENATOR

FREEFLEX

FREEFLEX



I LIKE THE WAY YOU MOVE

Freeflex provides a clever and adaptable solution to support the user's movements in their working environment. Flexibility is central to the design of Freeflex, giving the user the freedom to make simple adjustments; to their seat height, seat depth and back height to achieve ultimate comfort.

In designing Freeflex, special attention was paid to the user's natural pivot points, where they flex and where they don't. This inspired the development of a dynamic weight balancing tilting action and articulated flexing back, which intuitively encourages movement, whilst providing great support.

Freeflex is available in an array of Color choices and combinations of Graphite and Black components or Graphite and Light Gray components, to create inspirational spaces within workplaces.

DIMENSIONS

OH-Overall Height OD-Overall Depth OW-Overall Width AH-Arm Height BH-Back Height SH-Seat Height SW-Seat Width SD-Seat Depth



FREEFLEX

STANDARD FEATURES (*Selected models only)

- 2.5" hard wheel casters*
- Stool height variation*
- Weight controlled synchronized mechanism with travel limitation in four steps, including locking upright*
- 2.4" seat depth adjustment*
- 2.75" back height adjustment
- Integrated flexible back membrane
- Width and height adjustable arms*
- Molded seat and back foam

- Contrasting mesh side panels on the seat and back, with a complementary colored back insert

OPTIONAL FEATURES

- 2.5" soft wheel casters
 - Two-tone upholstery
 - Gas lift color options
 - Choice of finish options available
- * Click to see finishes page

- ANSI/BIFMA x 5.1 x2011
- SCS-EC10.3-2014 v. 4.0 Indoor Advantage Gold



PERFORMANCE STANDARDS



DESIGN

Justus Kolberg

Justus Kolberg has been running his own design studio in Hamburg since 1997 after completing his studies in industrial design at the Muthesius Academy of Fine Arts and Design in Kiel in 1990.

Justus has received numerous honors including the IF Hannover Product Design Award, the Red Dot Design Centrum NRW, the IDEA-Gold Industrial Design Excellence Award and the Japanese Good Design Award.

FREEFLEX

BODY BALANCE TILT

- Features an intelligent recline mechanism that automatically adjusts to provide the correct level of support through the full range of its 22° recline motion with a ratio of 3:1.
- This mechanism incorporates a tilt travel limiter with three preset ranges of movement:- 5°, 12°, 22° of recline as well as the ability to lock in an upright position. The geometry of the mechanism truly balances to the individual user and ensures secure stable sitting while maintaining the correct orientation to the desk and VDT.
- The mechanism utilizes a single control for both seat height adjustment and for selecting the range of recline or upright lock. Seat depth adjustment is incorporated as standard. All controls and adjustments can be easily accessed from the seated position.



AT A GLANCE

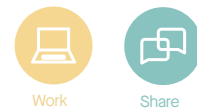
1. Flexible upper back
2. Multi-adjustable arms
3. Height adjustable back
4. Weight controlled synchronised mechanism and travel limitation in 4 steps, including locking upright
5. Graphite components with Black or Light Gray back and arms
6. Choice of contrasting mesh side panels and back insert Colors



GOOD TO KNOW

A cantilever side chair and stool height variation of Freeflex is available.

Please note: Features are model dependent, please refer to price list pages when specifying

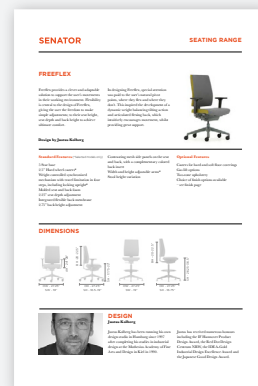


WANT TO KNOW MORE?

Our literature is available to download from our resource section on our website. For training notes, you can contact usmarketing@thesenatorgroup.com or call +1 (419) 887 5806

A full range overview and the following resources are available on each product page of our website.

For quick inspiration and all the latest news, follow us on social @senator_social.



Specification Sheet



Symbols



Environmental Data



Images (High Res)

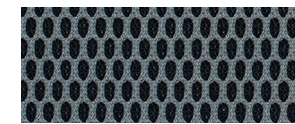
thesenatorgroup.com

FREEFLEX

FINISH OPTIONS

- 5 star base available in Graphite plastic or Polished Aluminum
- Plastic components available in Graphite with Black or Light Gray back and arms
- Contrasting mesh side panels and back inserts available in either Fog, Carbon, Storm, Sunset, Aqua or Avocado
- Freeflex can be upholstered in a broad range of contract upholstery fabrics, vinyls and leathers from The Senator Group standard upholstery collection

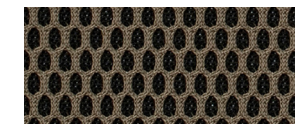
BREATHABLE MESH SIDE PANELS



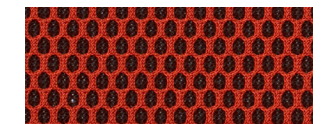
Fog



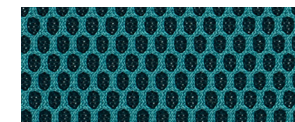
Carbon



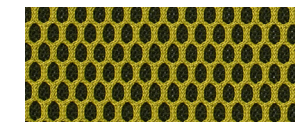
Storm



Sunset



Aqua



Avocado

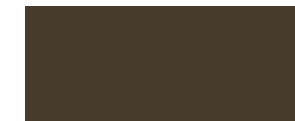
BACK INSERT COLORS



Fog



Carbon



Storm



Sunset



Aqua



Avocado



Brushed

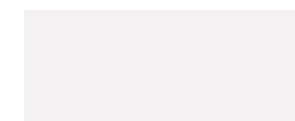
COMPONENT FINISH



Graphite

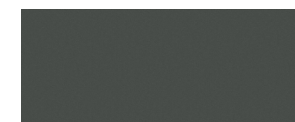


Black



Light Gray

BASE FINISHES



Graphite (Plastic)



Polished Aluminum

Color images above are for reference only. Please verify with actual color sample.

FREEFLEX

- Standard feature
- Not available
- Optional feature

	FLX740 Task Chair No Arms	FLX740HA Task Chair Height/Width Adjustable Arms	FLX740D Stool No Arms	FLX740DHA Stool Height/Width Adjustable Arms	FLX741A Visitor Chair
Weight	30lbs	33lbs	38lbs	40lbs	32lbs
Plastic base in Graphite	●	●	●	●	□
2.5" hard wheel casters in Black	●	●	□	□	□
Glides in Black	□	□	●	●	□
Gas lift in Graphite	●	●	□	□	□
Stool height gas lift and adjustable foot ring	□	□	●	●	□
Components in Black	□	□	□	□	●
Components in Graphite with Black back	□	●	□	●	□
Weight controlled synchronized mechanism with travel limitation in 4 steps	●	●	□	□	□
Limited recline function	□	□	●	●	□
2.75" back height adjustment	●	●	●	●	□
Integrated flexible back membrane	●	●	●	●	□
Height and width adjustable arms in Black	□	●	□	●	□
2.4" seat depth adjustment	●	●	□	□	□
Contrasting mesh side panels on seat and back - Carbon	●	●	●	●	●
Complementary colored back insert - Carbon	●	●	●	●	□
Molded seat and back foam	●	●	●	●	●
Tubular steel frame finished in Polished Chrome (stacks three high)	□	□	□	□	●
Soft touch arm pads	□	□	□	□	●
Components available in Graphite with Light Gray back	+ \$0	-	+ \$0	-	-
Base available in Polished Aluminum	+ \$95	+ \$95	+ \$95	+ \$95	-
Gas lift available in Brushed Steel	+ \$48	+ \$48	-	-	-
2.5" soft wheel casters available in Black	+ \$45	+ \$45	+ \$45	+ \$45	-
Contrasting mesh side panels on seat and back - Fog, Storm, Sunset, Aqua or Avocado	+ \$0	+ \$0	+ \$0	+ \$0	-
Complementary colored back insert - Fog, Storm, Sunset, Aqua, Avocado or Brushed	+ \$0	+ \$0	+ \$0	+ \$0	-
Components available in Graphite with Light Gray back and arms	-	+ \$0	-	+ \$0	-
Two-tone upholstery (use the price of the highest grade of the fabrics selected)	+ \$50	+ \$50	+ \$50	+ \$50	+ \$50

* Click here to see available Finishes.

* Click here to see available Fabrics.

Ships Semi-KD = Knock Down (Needs some assembly)

Freeflex Caster Options

Soft caster options are an upcharge of \$45 per chair

- 2.5" twin soft wheel casters for hard floors.

Stool height variations are available with plastic glides as an option



Hard wheel (standard)



Soft wheel



Plastic glides

FREEFLEX

Fabric Grade	0	1	2	3	4	5	6	7	8	9	A	B	COM	COL	
FLX740 · Task chair · No arms · Graphite components · Contrasting mesh side panels & back insert	-	998	1,014	1,030	1,048	1,070	1,091	1,114	1,137	1,181	1,264	1,181	1,347	1,014	1,048
														1.2 yds	21 sq ft.
FLX740HA · Task chair with height and width adjustable arms · Graphite components · Contrasting mesh side panels & back insert	-	1,120	1,136	1,152	1,170	1,192	1,213	1,236	1,259	1,303	1,386	1,303	1,469	1,136	1,170
														1.2 yds	21 sq ft.
FLX740D · Stool · No arms · Graphite components · Contrasting mesh side panels & back insert	-	1,169	1,184	1,200	1,218	1,240	1,262	1,283	1,307	1,350	1,434	1,350	1,518	1,184	1,218
															21 sq ft.
FLX740DHA · Stool with height and width adjustable arms · Graphite components · Contrasting mesh side panels & back insert	-	1,290	1,305	1,321	1,339	1,361	1,383	1,404	1,428	1,471	1,555	1,471	1,639	1,305	1,339
															21 sq ft.
FLX741A · Visitor chair · Chrome frame · With arms · Stacking	-	863	884	907	928	959	987	1,018	1,048	1,107	1,225	1,107	1,343	907	928
														1.25 yds	27.5 sq ft.

A, B = Leather

COM = Customers own Material (yds)

COL = Customers own Leather (sq ft.)

All prices listed in US \$



To specify your chair...

1. Check the Standard Features and Finishes and select the Model you require
2. Select the Fabric Grade for the fabric you are using, this will give you the basic price per chair
3. Select any Optional Extras or Alternative Finishes you require and add on any extra costs as shown per chair
4. You now have the total cost and specification for Your Chair

When ordering, please ensure that you send us all this information, so we can correctly fulfil your requirements.

SENATOR

**FREEFLEX
MESH**

FREEFLEX MESH



FREEFLEX MESH

STANDARD FEATURES (*Selected models only)

- 2.5" hard wheel casters*
- Stool height variation*
- Weight controlled synchronized mechanism with travel limitation in four steps, including locking upright*
- 2.4" seat depth adjustment*
- 3D self supporting mesh back
- Width and height adjustable arms*
- Adjustable lumbar support

OPTIONAL FEATURES

- 2.5" soft wheel casters
- Gas lift color options
- Choice of finish options available

* Click to see finishes page

PERFORMANCE STANDARDS

- ANSI/BIFMA x 5.1 x2011
- SCS-EC10.3-2014 v. 4.0 Indoor Advantage Gold



I LIKE THE WAY YOU MOVE

The new Freeflex Mesh task chair delivers fantastic comfort with simple elegant styling. The chair's ergonomic design and contoured mesh back allows heat to ventilate away from the spine, making it particularly suitable when postural support is required for long periods of time.

Freeflex Mesh provides a clever and adaptable solution to support the user's movements in their working environment.

Flexibility is central to the design of Freeflex Mesh, giving the user the freedom to make simple adjustments; to their seat height, seat depth to achieve ultimate comfort.

In designing Freeflex Mesh, special attention was paid to the user's natural pivot points, where they flex and where they don't. This inspired the development of a dynamic weight balancing tilting action that intuitively encourages movement, while providing great support.

DIMENSIONS

OH-Overall Height OD-Overall Depth OW-Overall Width AH-Arm Height BH-Back Height SH-Seat Height SW-Seat Width SD-Seat Depth



DESIGN

Justus Kolberg

Justus Kolberg has been running his own design studio in Hamburg since 1997 after completing his studies in industrial design at the Muthesius Academy of Fine Arts and Design in Kiel in 1990.

Justus has received numerous honors including the IF Hannover Product Design Award, the Red Dot Design Centrum NRW, the IDEA-Gold Industrial Design Excellence Award and the Japanese Good Design Award.

FREEFLEX MESH

BODY BALANCE TILT

- Features an intelligent recline mechanism that automatically adjusts to provide the correct level of support through the full range of its 22° recline motion with a ratio of 3:1.
- This mechanism incorporates a tilt travel limiter with three preset ranges of movement: - 5°, 12°, 22° of recline as well as the ability to lock in an upright position. The geometry of the mechanism truly balances to the individual user and ensures secure stable sitting while maintaining the correct orientation to the desk and VDT.
- The mechanism utilizes a single control for both seat height adjustment and for selecting the range of recline or upright lock. Seat depth adjustment is incorporated as standard. All controls and adjustments can be easily accessed from the seated position.



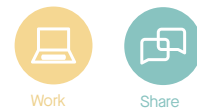
AT A GLANCE

1. 3D self supporting mesh back
2. Multi-adjustable arms
3. Weight controlled synchronized mechanism with adjustable tension and travel limitation in four steps, including locking upright
4. Dark Gray components with Black or Light Gray back and arms



GOOD TO KNOW
A stool height variation of Freeflex Mesh is available.

Please note: Features are model dependent, please refer to price list pages when specifying

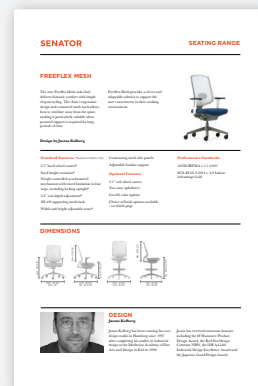


WANT TO KNOW MORE?

Our literature is available to download from our resource section on our website. For training notes, you can contact usmarketing@thesenatorgroup.com or call +1 (419) 887 5806

A full range overview and the following resources are available on each product page of our website.

For quick inspiration and all the latest news, follow us on social @senator_social.



Specification Sheet



Symbols



Environmental Data



Images (High Res)

FREEFLEX MESH

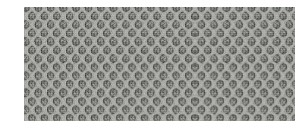
FINISH OPTIONS

- 5 star base available in Graphite plastic or Polished Aluminum
- Plastic components available in Graphite with Black or Light Gray back and arms
- Freeflex Mesh can be upholstered in a broad range of contract upholstery fabrics, vinyls and leathers from The Senator Group standard upholstery collection

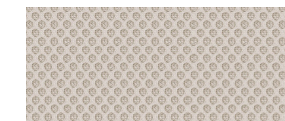
MESH COLORS



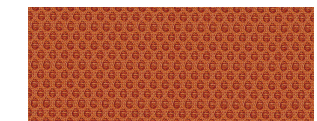
Black



Gray



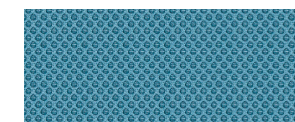
Snow



Burnt Orange



Fresh Apple

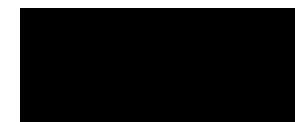


Soft Cyan

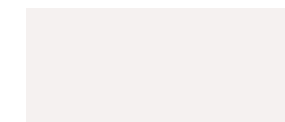
COMPONENT FINISH



Graphite (Plastic)



Black (Plastic)



Light Gray (Plastic)

ARM / BACK FINISHES

BASE FINISHES



Graphite (Plastic)



Polished Aluminum

GAS LIFT FINISHES



Graphite



Brushed Steel

Color images above are for reference only. Please verify with actual color sample.

FREEFLEX MESH

- Standard feature
- Not available
- Optional feature

	FLX840 Task Chair No Arms	FLX840HA Task Chair Height/Width Adjustable Arms	FLX840D Stool No Arms	FLX840DHA Stool Height/Width Adjustable Arms
Weight	30lbs	33lbs	38lbs	40lbs
Plastic base in Graphite	●	●	●	●
2.5" hard wheel casters in Black	●	●	●	●
Glides in Black	□	□	●	●
Gas lift in Graphite	●	●	□	□
Stool height gas lift and adjustable foot ring	□	□	●	●
Components in Black	□	□	□	□
Components in Graphite with Black back	□	●	□	●
Weight controlled synchronized mechanism with travel limitation in 4 steps	●	●	□	□
Limited recline function	□	□	●	●
3D self supporting mesh back	●	●	●	●
Height and width adjustable arms in Black	□	●	□	●
2.4" seat depth adjustment	●	●	□	□
Molded seat	●	●	●	●
Components available in Graphite with Light Gray back	+ \$0	-	+ \$0	-
Base available in Polished Aluminum	+ \$95	+ \$95	+ \$95	+ \$95
Gas lift available in Brushed Steel	+ \$48	+ \$48	-	-
2.5" soft wheel casters available in Black	+ \$45	+ \$45	+ \$45	+ \$45
Self supporting mesh back available in Black, Gray, Snow, Burnt Orange, Fresh Apple, or Soft Cyan	+ \$0	+ \$0	+ \$0	+ \$0
Components available in Graphite with Light Gray back and arms	-	+ \$0	-	+ \$0

* Click here to see available Finishes.

* Click here to see available Fabrics.

Ships Semi-KD = Knock Down (Needs some assembly)

FREEFLEX MESH

Fabric Grade		0	1	2	3	4	5	6	7	8	9	A	B	COM	COL
FLX840 · Task chair, · No arms · Graphite components	-	848	862	876	891	910	927	947	966	1,004	1,074	1,004	1,145	862	891
														1.2 yds	21 sq ft.
FLX840HA · Task chair with height and width adjustable arms · Graphite components	-	952	966	979	995	1,013	1,031	1,051	1,070	1,108	1,178	1,108	1,249	966	995
														1.2 yds	21 sq ft.
FLX840D · Stool · No arms · Graphite components	-	994	1,006	1,020	1,035	1,054	1,073	1,091	1,111	1,148	1,219	1,148	1,290	1,006	1,035
														1.2 yds	21 sq ft.
FLX840DHA · Stool with height and width adjustable arms · Graphite components	-	1,097	1,109	1,123	1,138	1,157	1,176	1,193	1,214	1,250	1,322	1,250	1,393	1,109	1,138
														1.2 yds	21 sq ft.

A, B = Leather

COM = Customers own Material (yds)

COL = Customers own Leather (sq ft.)

All prices listed in US \$



Freeflex Mesh Caster Options

Soft caster options are an upcharge of \$45 per chair

- 2.5" twin soft wheel casters for hard floors.

Stool height variations are available with plastic glides as an option



Hard wheel (standard)



Soft wheel



Plastic glides

To specify your chair...

1. Check the Standard Features and Finishes and select the Model you require
2. Select the Fabric Grade for the fabric you are using, this will give you the basic price per chair
3. Select any Optional Extras or Alternative Finishes you require and add on any extra costs as shown per chair
4. You now have the total cost and specification for Your Chair

When ordering, please ensure that you send us all this information, so we can correctly fulfil your requirements.