

Diva K2051

KT Collection *affordable modern design*

Primary Use
Upholstery

Content
Polyester 55%
Acrylic 45%

Width
54 inches

High Performance
50,000+ double rubs

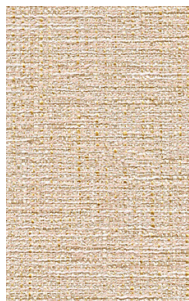
Environmental
Clean Air GOLD



K2051/14 Limelight



K2051/1 Moon



K2051/13 Allure



K2051/15 Starlet



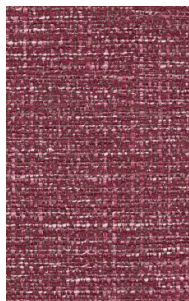
K2051/2 Daffodil



K2051/3 Saffron



K2051/4 Poppy



K2051/5 Snapdragon



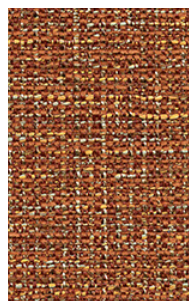
K2051/6 Green Tea



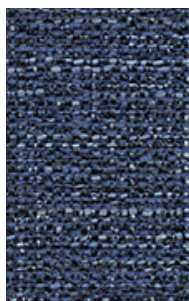
K2051/7 Lagoon



K2051/8 Evergreen



K2051/16 Maple



K2051/17 Songbird



K2051/9 Wallflower



K2051/11 Platinum



K2051/12 Coal

Name	Diva KT Collection
Style Number	K2051
Primary Use	Upholstery
Content	Polyester 55% Acrylic 45%
Backing	Acrylic
Finish	Soil and stain repellent
Weight	22.5 oz. per linear yard
Width	54 inches
Flame Resistance	NFPA 260 (UFAC Class 1)
Lightfastness	AATCC 16E, 40 hours, Class 4.5
Abrasion	50,000+ double rubs, Wyzenbeek method
Maintenance	W-S: Clean with water or solvent based cleaning agent
Custom	Some custom colors available with a minimum of 110 yards. Additional charges or lead times may be required.
Environmental	This fabric is certified Clean Air GOLD for low VOC emissions and may contribute to LEED®, WELL Building, and Living Building Challenge certification.

